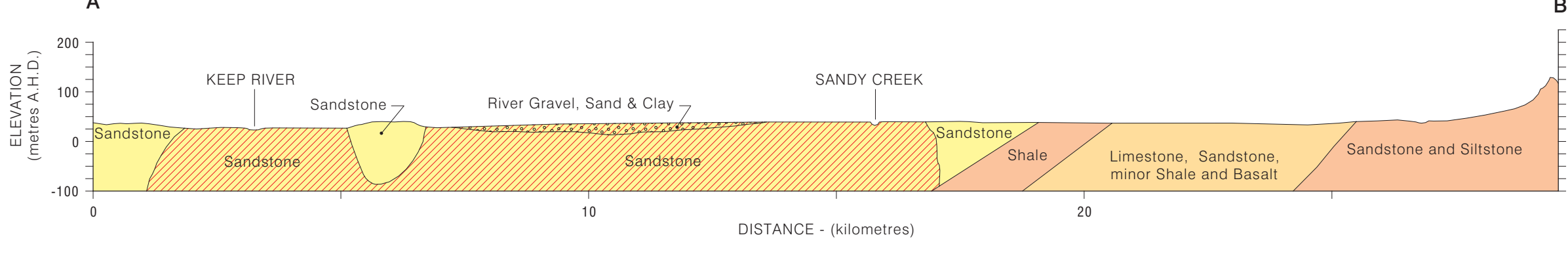


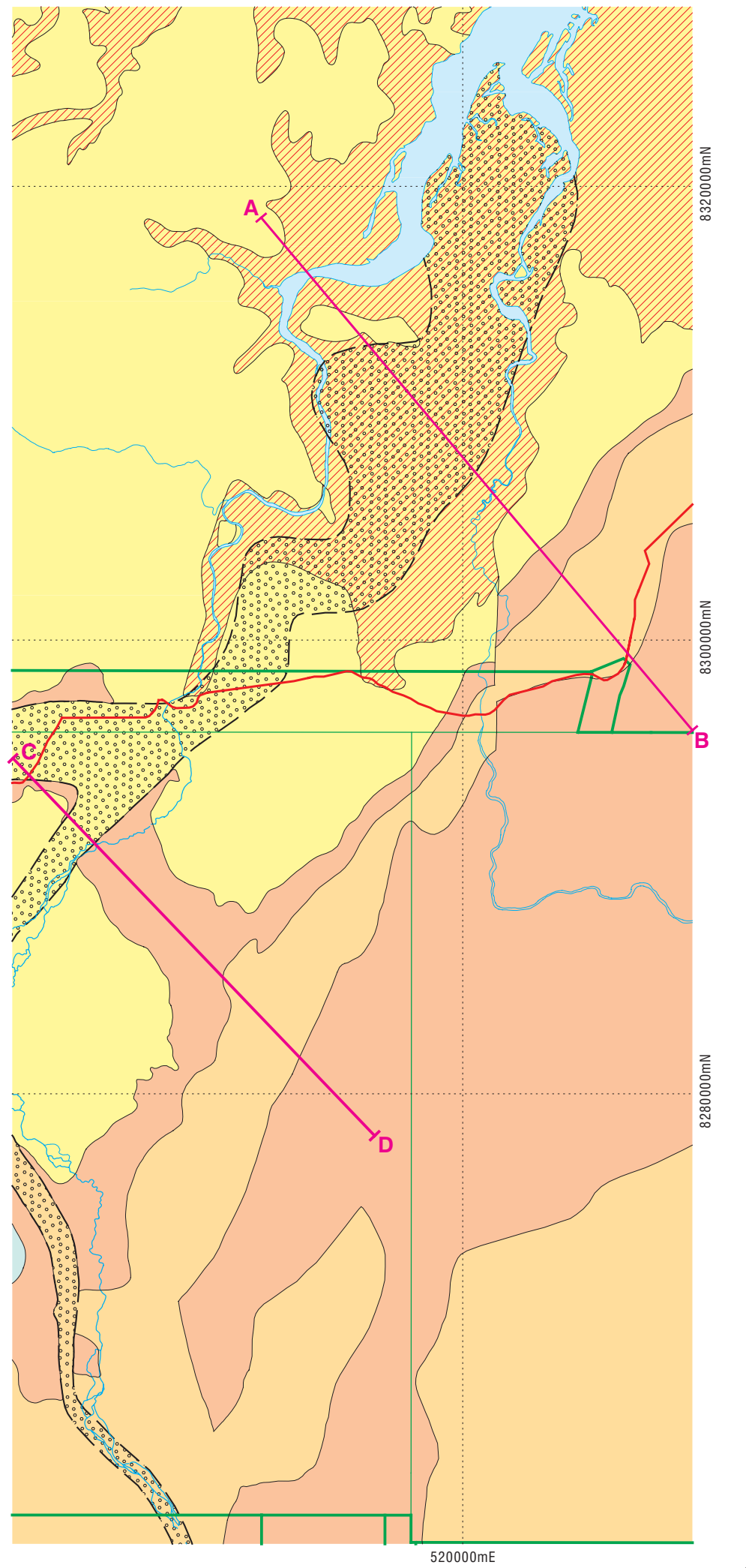
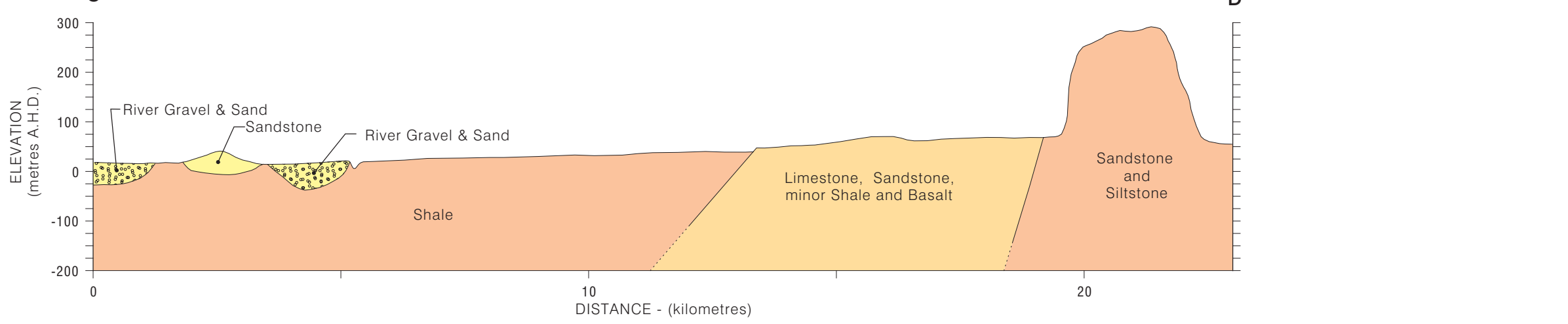
GROUNDWATER RESOURCES MAP

- REFERENCE**
- FRACTURED AND WEATHERED ROCKS - LOCAL AQUIFERS**
- yield 0.0 to 0.5 L/s
Fresh water but may be brackish beneath the Keep River Plain
 - FRACTURED AND WEATHERED ROCKS - LOCAL AQUIFERS - INCLUDES SANDSTONE AND CAVERNOUS LIMESTONE**
- yield 0.5 to 5 L/s
Fresh water
 - POROUS AND FRACTURED ROCKS - WIDESPREAD AQUIFERS - MAINLY SOFT SANDSTONE**
- yield more than 5 L/s
Fresh water, mostly suitable for irrigation.
Saline water
- LEGEND**
- River sand and gravel aquifer overlying older rocks
 - Line of cross-section
 - Note: Also see main map for lines of cross-section
- Scale: 0 5 10 15 km

DIAGRAMMATIC SECTION A-B



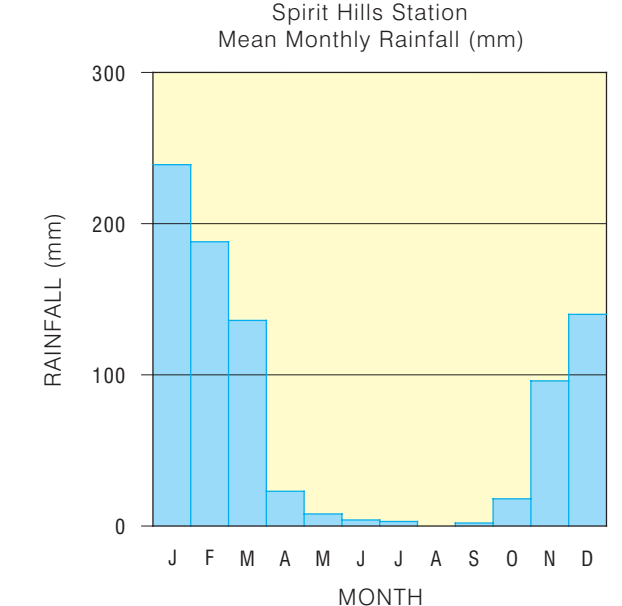
DIAGRAMMATIC SECTION C-D



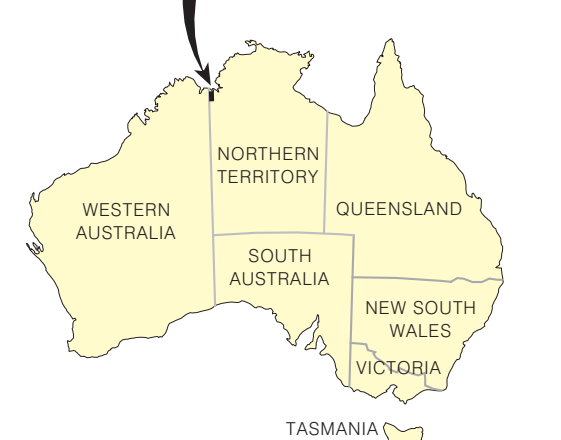
LEGEND

- Development boundary
- Development option number
- Abandoned bore
- Capped or investigation bore
- Flowing bore
- Registered number of bore
- Name of bore
- Turkey nest dam
- Ephemeral watercourse
- Waterhole/billabong
- Major road
- Track
- Building's
- Landing ground
- Fence
- Spot elevation - m A.H.D.
- Cadastral boundary
- State boundary

RAINFALL



MAP LOCALITY



INDEX TO 1 : 100000 MAP SHEETS

LEGUNE 4767	VICTORIA RIVER 4867	MILLIK MONMIR 4967
KEEP 4766	PINKENTON 4866	ALVERGNE 4966
NEWRY 4765	KILDURK 4865	BAINES 4965

kilometres 0 1 2 3 4 5 10 15 kilometres

Black Numbered Lines are 10000 Metre Intervals of the Map Grid of Australia (MGA), Zone 52
Vertical Datum: Australian Height Datum
Projection: Universal Transverse Mercator

Design File: Keep-R-Plains_Wrs_m52
Plot File: Keep-River-Plains_Water-Resources

This map was produced on the Geocentric Datum of Australia 1994 (GDA 94)

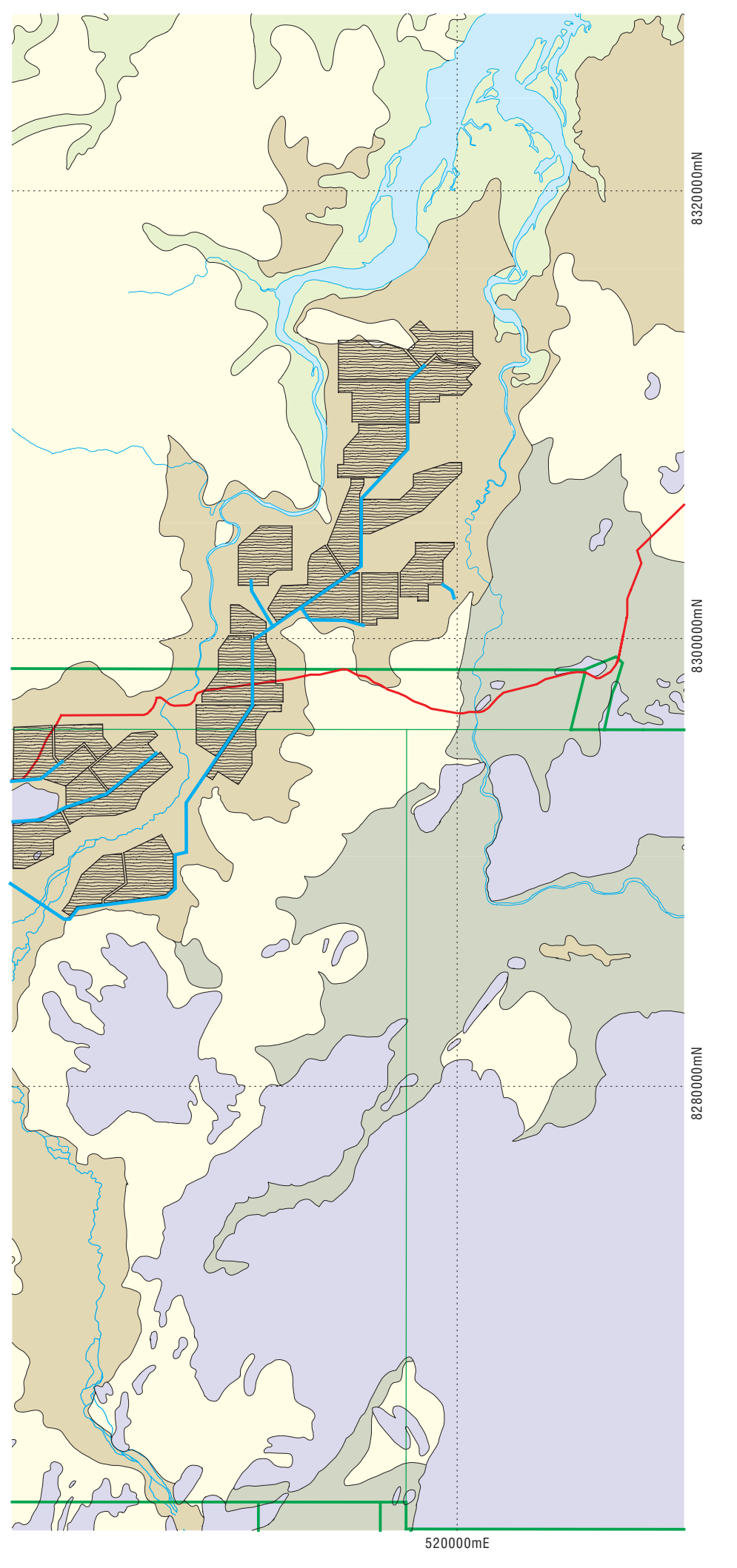
GEOMORPHIC MAP

DESCRIPTION

- Mostly flat alluvial plains with cracking clay soils. Surface runoff moderate to high.
- Gently sloping alluvial plains with leached loamy and sandy soils. Surface runoff moderate.
- Gently undulating country on sandstone with colluvium and sandy soils. Surface runoff low to moderate.
- Estuarine alluvial plains with saline soils, and mud.
- Hilly country with ridges, rock outcrop and skeletal soils. Surface water runoff high.

LEGEND

- Proposed irrigation channel
- Proposed irrigation areas



WATER RESOURCES DEVELOPMENT OPTIONS

PREFERRED OPTION	DESCRIPTION
1	Piping from natural waterholes where present Rock ridge country with high runoff rates. Area economically and/or physically unsuitable for artificial water supply development, however at the base of the escarpments and hills, development of hillside storages for stock watering may be feasible. Groundwater yields generally very low. Area is unsuitable for agriculture.
2	Unsuitable Saline coastal plains, subject to tidal inundation, unsuitable for agriculture.
3	Channel supply from Ord River Alluvial plains, black cracking clay soils suitable for irrigation. Moderate to high runoff. Groundwater either not available or to saline for use.
4	Surface water storage or piping from waterholes or bores Alluvial outwash plain, minor laterite plain. Moderate runoff, variable soil types. Surface water development may be possible where soil and subsol conditions are favourable.
5	Groundwater Gently undulating country underlain by soft, water bearing sandstone. Laterite plain with sandy soils. High probability of obtaining more than 5.0 L/s of fresh groundwater in most areas.
6	Surface water or groundwater Alluvial outwash plain, minor laterite plain. Variable soil types. Moderate runoff. 60% probability of obtaining groundwater supplies of between 0.5 and 5.0 L/s at selected sites in limestone and sandstone. Local soil types will determine suitability for stock supply dams.
7	Channel supply from Ord River Alluvial plains on the Keep River, black cracking clay soils suitable for irrigation. Moderate to high runoff. Groundwater brackish to fresh. High probability of obtaining more than 5.0 L/s in most areas.



WATER RESOURCES DEVELOPMENT MAP OF THE KEEP RIVER PLAINS

For further information contact:
Principal Engineer, Water Resources,
Natural Systems Division,
Conservation and Natural Resources Group,
Department of Infrastructure, Planning and Environment,
Ph. (08) 8999 3606, Fax. (08) 8999 3666
Goyder Centre, Chung Wah Terrace, Palmerston,
Northern Territory of Australia.