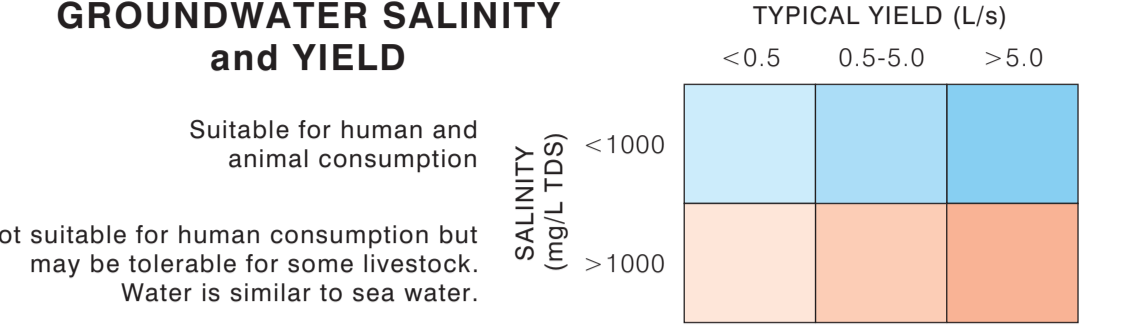


HYDROGEOLOGICAL MAP of DARWIN 1: 250 000

MAP SHEET SD 52-4



For further information contact:
 Manager, Water Resources, Natural Systems Division,
 Conservation and Natural Resources Group, Department of Infrastructure, Planning
 and Environment. Ph. (08) 8999 3606, Fax. (08) 8999 3666
 Goyder Centre, Chung Wah Terrace, Palmerston, Northern Territory of Australia.

HYDROGEOLOGY

- CARBONATE - FRACTURED & CAVERNOUS ROCKS**
 - yield >5.0 L/s
 K Bathurst Island formation /
 Kp Koolpin Dolomite
 Epc Coomalie Dolomite Formation
 Esd Dolomite, unnamed
- FRACTURED WEATHERED ROCKS**
 - yield 0.5 to 5.0 L/s
 Esk Koolpin Formation
 Epi Whites Formation
 Epr Crater Formation
 Etn Namooona Group
 K Bathurst Island Formation /
 Ewt Well Tree Metamorphics
 K Bathurst Island Formation /
 Ews Sweets Member
- FRACTURED WEATHERED ROCKS WITH MINOR GROUNDWATER RESOURCES**
 - yield <0.5 L/s
 Qca Quaternary mud, silt, clay
 Dca Depot Creek Formation
 Etb Burrell Creek Formation
 Eps Mount Bonnie Formation
 Esg Gerrowie Tuff Formation
 Esl Ella Creek Member
 Esm Mount Deane Volcanic Member
 Epw Wildman Siltstone Formation
 Epm Mundogie Sandstone Formation
 Epa Acacia Gap Member
 Egu Mount Bundie Granite
 Egt Goyder Syenite
 Egs Two Sister Granite
 Egd Zamu Dolerite
 Ewt Well Tree Metamorphics
 Ews Sweets Member
 Ec Fog Bay Metamorphics
 Awg Woolner Granite
 Ar Rum Jungle Complex
 App Dirty Water Metamorphics

LEGEND

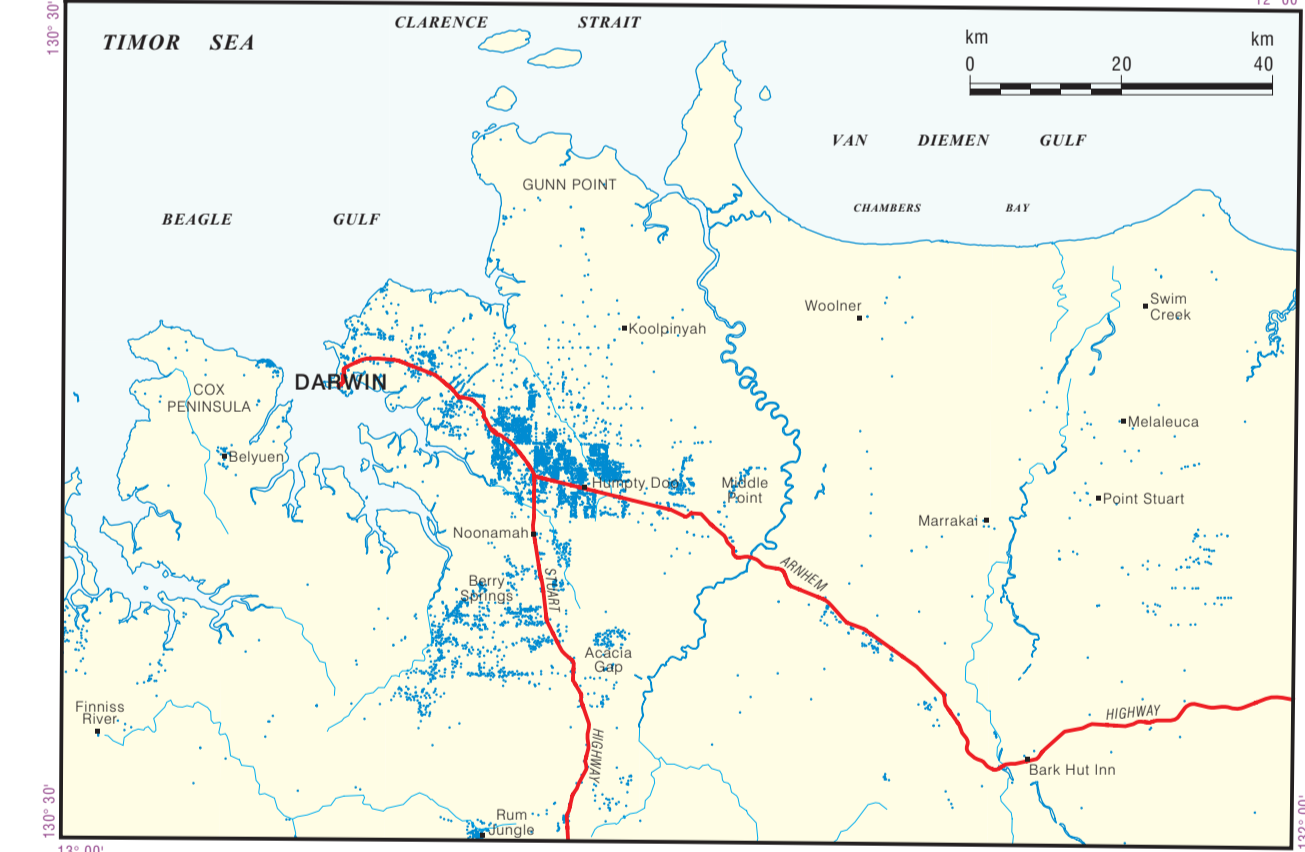
- Geological formation boundary
- Surface water catchment divide
- Stream gauging station
- Rainfall gauging station
- Watercourse
- Dam or water-hole
- Perennial Spring
- Perennial groundwater seepage area
- Main road, sealed
- Minor road
- Vehicle track
- Landing ground
- Municipal / Shire boundary
- National park boundary
- Gas pipeline
- Proposed railway
- Mangrove

This map was produced on the Geocentric Datum of Australia 1994 (GDA 94)

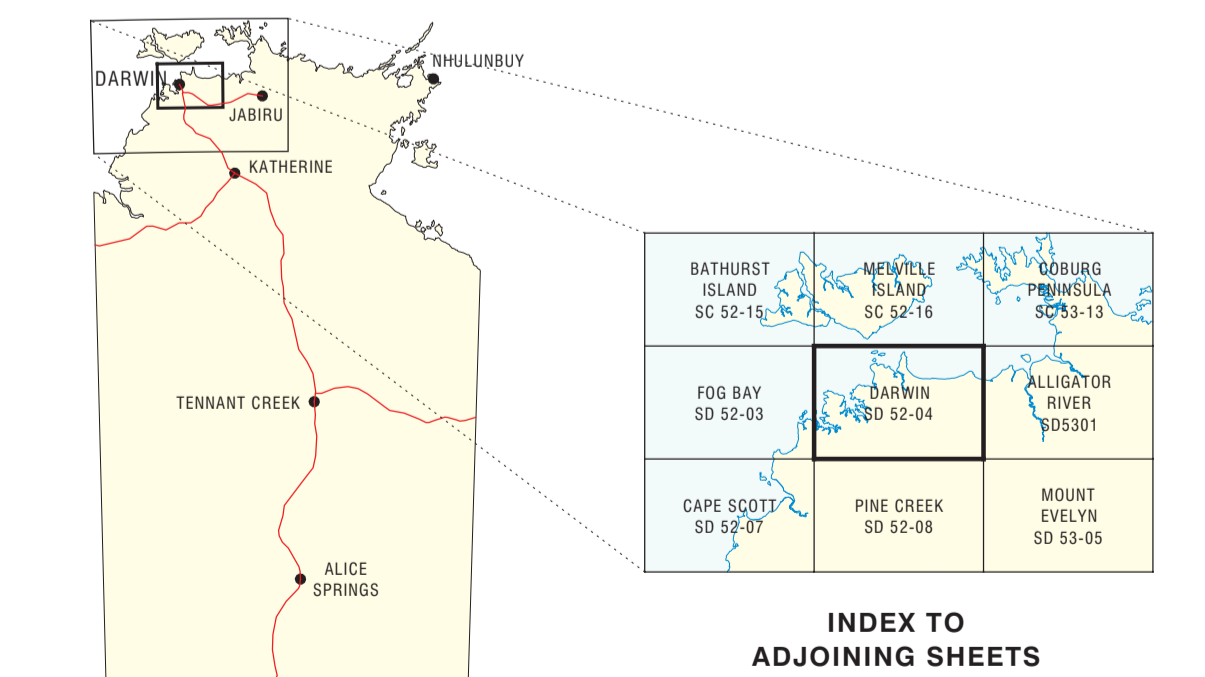


Black numbered lines are 20000 metre intervals of the Map Grid of Australia (MGA), Zone 52
 Horizontal Datum: GDA 94 Vertical Datum: AHD (metres)

BORE DENSITY

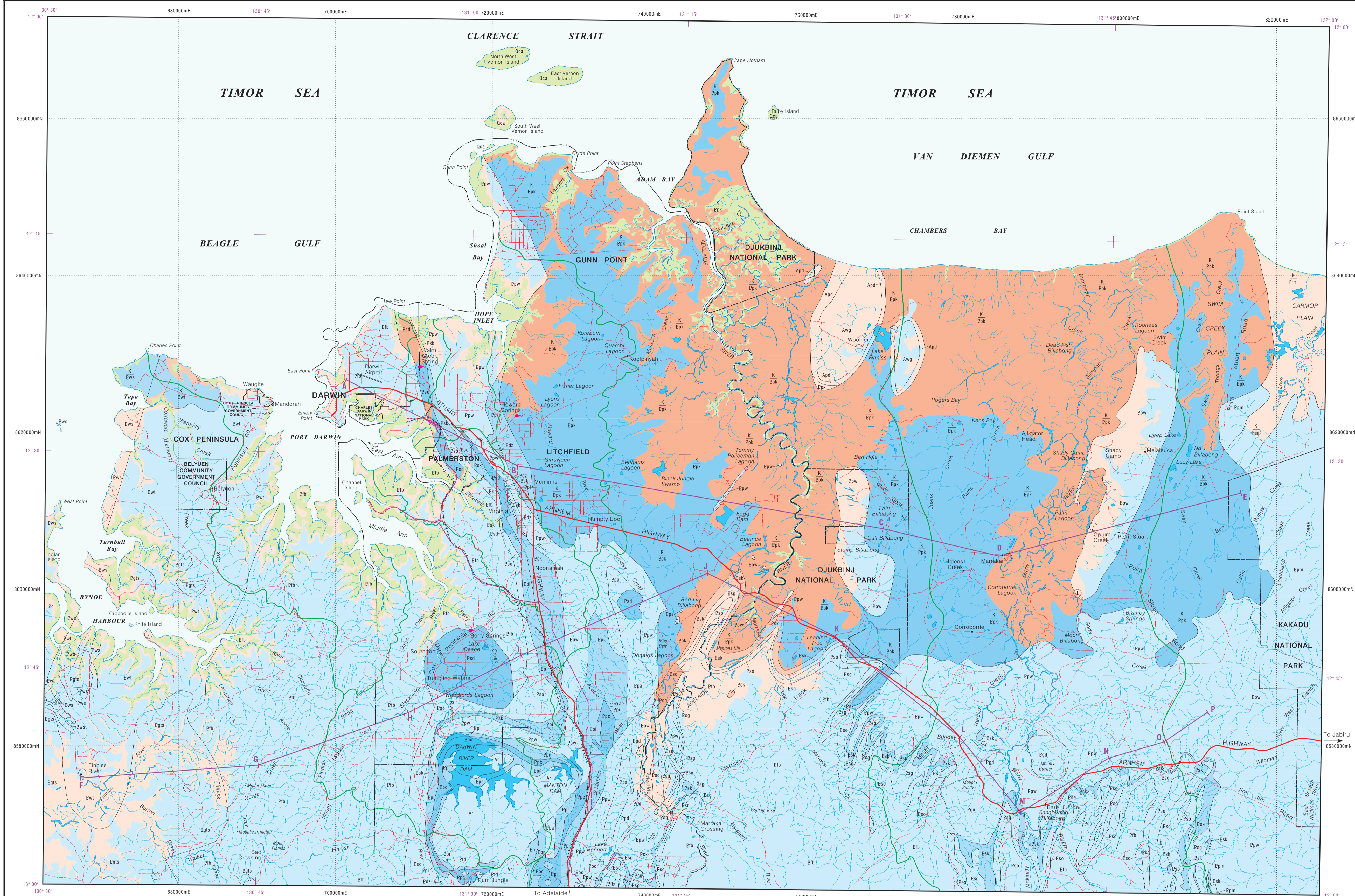


MAP LOCALITY & 1:250 000 SHEET INDEX

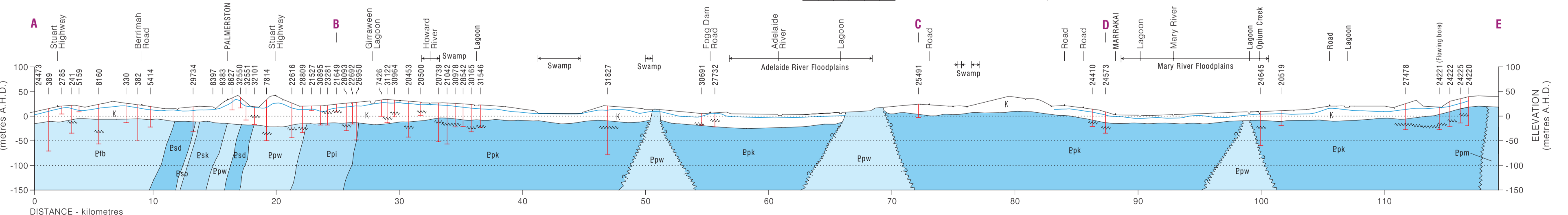


This product and all material forming part of it is copyright belonging to the Northern Territory of Australia. You may use this material for your personal, non-commercial use or use it within your organisation for non-commercial purposes, provided that an appropriate acknowledgement is made and the material is not altered in any way. Subject to the fair dealing provisions of the Copyright Act 1968, you must not make any other use of this product (including copying or reproducing it or part of it in any way) unless you have the written permission of the Northern Territory of Australia to do so.

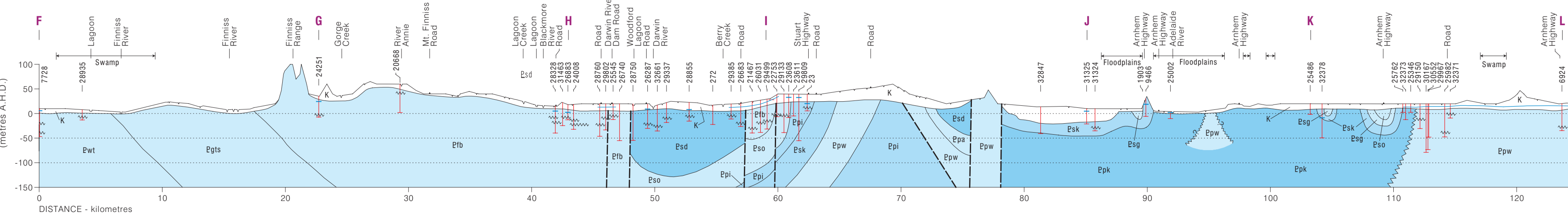
The Northern Territory of Australia does not warrant that the product or any part of it is correct or complete and will not be liable for any loss damage or injury suffered by any person as a result of its inaccuracy or incompleteness.



DIAGRAMMETRIC CROSS-SECTION A - E



DIAGRAMMETRIC CROSS-SECTION F - P



LEGEND

- Registered number of bore
- Cretaceous sediments
- Standing water level
- Borehole
- Water struck
- Depth of borehole
- Fault

Hydrogeology by M. N. Verma, Cartography by L. Fritz,
 Project coordination by P. Jolly, Natural Resources Division,
 Department of Infrastructure, Planning and Environment.

Prepared and produced by the Natural Resources Division,
 Department of Infrastructure, Planning and Environment,
 Northern Territory of Australia.

EDITION 2 - APRIL 2004
 Design File: Darwin250k_Hyd-Geol_52m
 Plot File: Darwin250k_Hyd-Geol

The Northern Territory accepts no liability for the accuracy of the information provided. Furthermore the Northern Territory of Australia does not warrant that this product contains the latest information available nor that the information is free from errors.