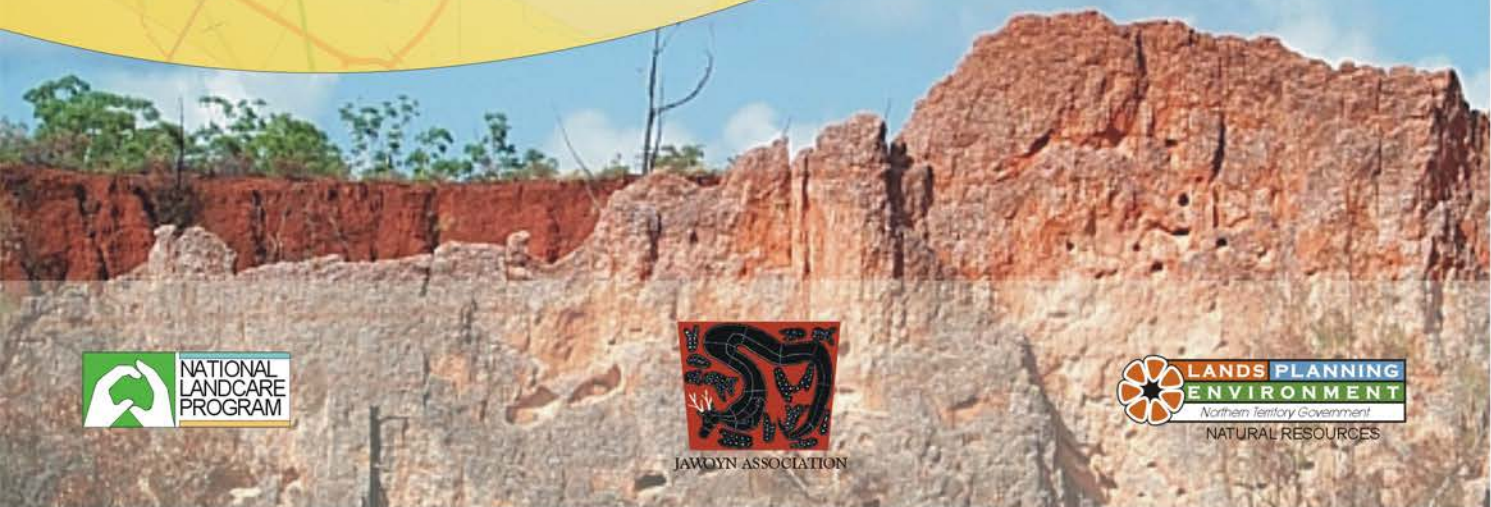
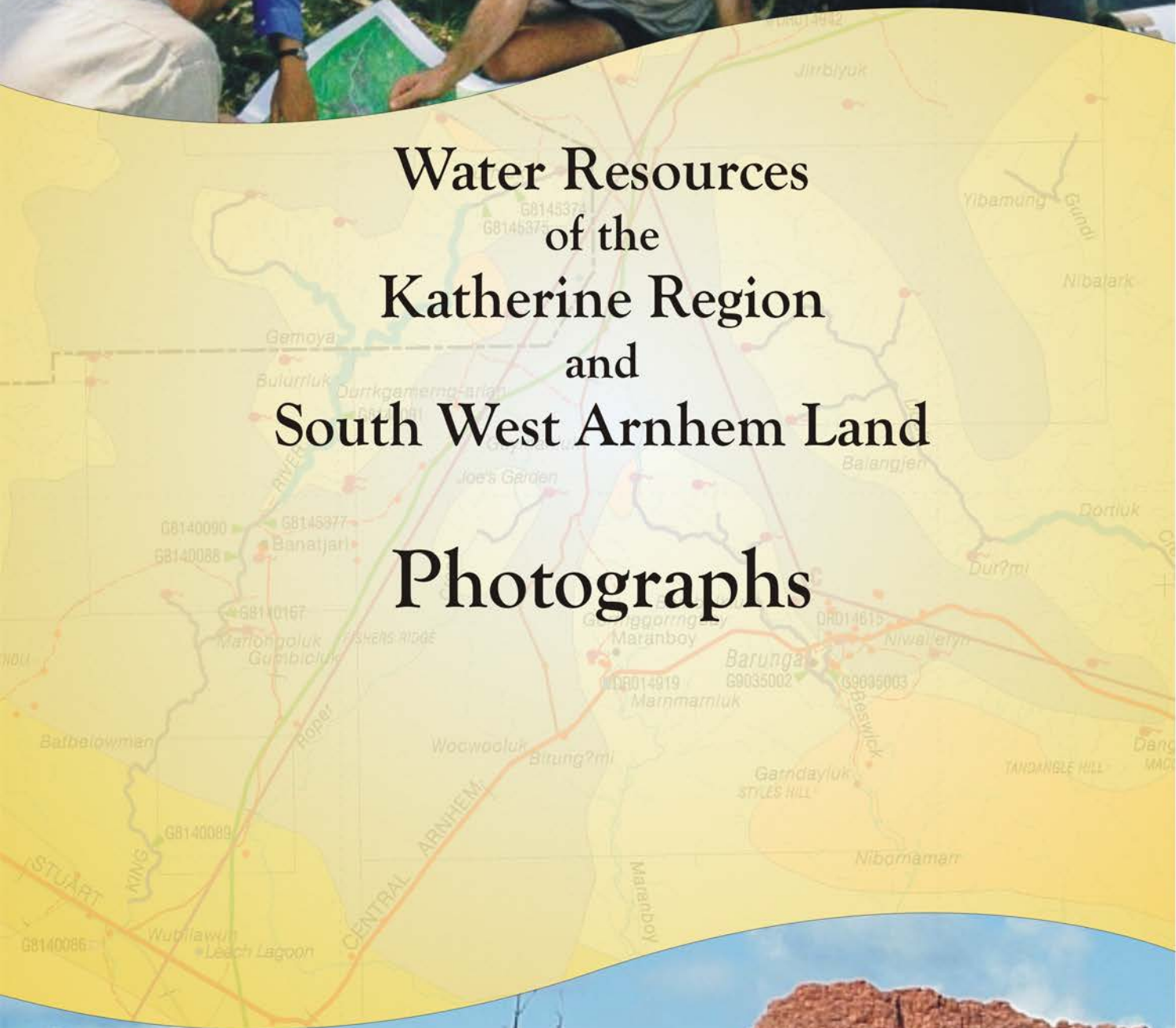




# Water Resources of the Katherine Region and South West Arnhem Land Photographs



NATIONAL  
LANDCARE  
PROGRAM



JAWYN ASSOCIATION



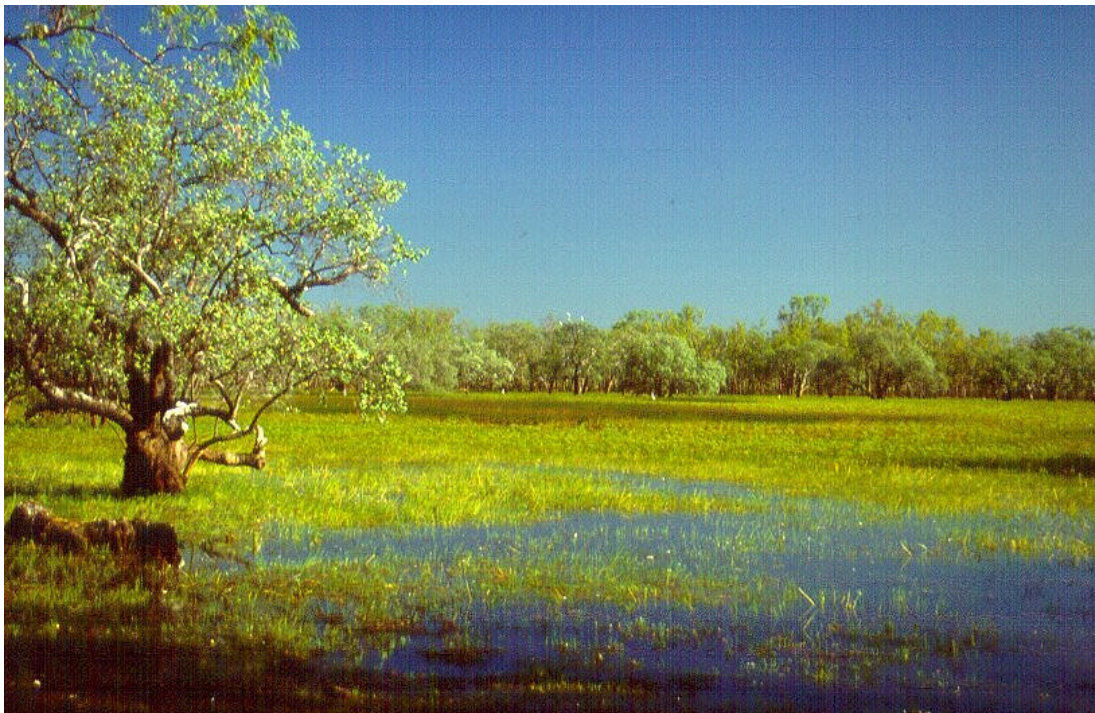
LANDS PLANNING  
ENVIRONMENT  
Northern Territory Government  
NATURAL RESOURCES



DEPARTMENT OF LANDS, PLANNING AND ENVIRONMENT  
NATURAL RESOURCES DIVISION

**WATER RESOURCES  
OF THE  
KATHERINE REGION  
AND  
SOUTH WEST ARNHEM LAND**

**PHOTOGRAPHS**



Comoye Billabong

REPORT NUMBER 33/2001D  
D. GEORGE  
DARWIN NT



The following is a record of photographs taken as part of the project **Water Resources of the Katherine Region and South West Arnhem Land**.

All of these photographs are in digital format, and many of them can be viewed via the project ArcView GIS.

The photographs have been grouped according to nine categories :

- Aerial Photographs** - Taken during fixed wing and helicopter surveys
  
- Katherine River Photographs** - Taken on or close to the Katherine River and its major tributaries.
  
- South Alligator River** - Photographs taken on or close to the South Alligator River and its major tributaries.
  
- Mann River Photographs** - Taken on or close to the Upper Mann River during the Fauna and Flora survey on September 2000
  
- Spring Photographs** - Springs and seeps, and the surrounding areas.
  
- Waterhole Photographs** - Major waterholes in the area.
  
- King River Photographs** - King River Valley upstream of Banatjarl.
  
- Drilling and Geology** - Photographs of interesting geological features, geophysical surveys and bore drilling procedures.
  
- General Photographs** - Various photographs taken during the project.
  
- Roper River Photographs** - Taken in the Roper River catchment, both in and out of the actual project area.



Aerial Photographs

File Number	Description	Date	Easting	Northing
a1	Waterhouse West Branch from air	Oct-99	306390	8433081
a2	Mainoru River, upstream view	Oct-99	376867	8465080
a3	Arial view, Upper Flying Fox Creek area	Oct-99	343527	8471543
a4	Upper Katherine River	Oct-99	300312	8475271
a5	Katherine River downstream of Birdie Creek Confluence	Oct-99	227039	8499719
a6	Katherine River and Snake Creek	Oct-99	241838	8421678
a7	Katherine Riveer and Terrance Creek	Oct-99	236686	8417595
a8	Katherine Gorge 9 and 10 from the air	Oct-99	232373	8416590
a9	Katherine Gorge from air	Oct-99	231000	8415585
a10	Katherine Gorge from air	Oct-99	228532	8415738
a11	Katherine Gorge from air	Oct-99	225275	8415509
a12	Billabong on Upper Waterhouse River from air	Oct-99	315114	8436220
a13	Waterhouse River from air	Oct-99	323007	8439774
a14	Kombolgie Sandstone landscape	Oct-99	343693	8446521
a15	Flying Fox Creek from air	Oct-99	353635	8449901
a16	Mainoru River upstream of crossing	Oct-99	379552	8459678
a17	Sinkhole in Dook Creek Formation - Mainoru	Oct-99	384656	8463257
a18	Sinkhole in Dook Creek Formation - Mainoru	Oct-99	387075	8464086
a19	Sinkhole in Dook Creek Formation - Mainoru	Oct-99	387970	8465213
a20	Aerial view of the Katherine Gorge			
a21	Aerial view of the Katherine Gorge			
a22	View of Gorge 9 vicinity			
a23	Aerial view of Nitmiluk escarpment			
a24	Aerial view of gorge 8			
a25	Kombolgie sandstone landform			
a26	Nitmiluk escarpment from air			
a27	Aerial view of Katherine Gorge			
a28	Katherine Gorge 6			
a29	Aerial view of the Katherine Gorge			
a30	Aerial view of the Katherine Gorge - upper			
a31	Edge of Murruwal Plateau - near Douglas Springs	Nov-00	218559	8476873
a32	Edge of Murruwal Plateau - near Douglas Springs	Nov-00		
a33	Douglas Springs - looking west	Nov-00	219586	8470755
a34	Douglas Springs Valley	Nov-00	218829	8470864
a35	Middle of Murruwal Plateau	Nov-00		
a36	Keckwick Springs	Nov-00		
a37	Upper South Alligator Springs area - Tertiary Outcrop	Nov-00		
a38	Upper South Alligator Springs area - Tertiary Outcrop	Nov-00	244045	8478207
a39	Dinner Creek Catchment	Nov-00		
a40	Dinner Creek Falls	Nov-00	241210	8489898
a41	South Alligator Valley - western escarpment	Nov-00		
a42	Guratba - Coronation Hill	Nov-00	240782	8496127
a43	South Alligator River and Pul Pul Hill	Nov-00		
a44	South Alligator River Valley	Nov-00		
a45	South Alligator River Valley - near Gimbat	Nov-00		
a46	Dissected Kombolgie Sandstone surface	Nov-00	227039	8499719
a47	Dissected Kombolgie Sandstone surface	Nov-00	226545	8499357
a48	Kombolgie Creek - upstream	Nov-00	221239	8494875
a49	Ferny Gully - upstream source	Nov-00		
a50	Kombolgie escarpment near Mary River Ranger Station	Nov-00	226545	8499357
a51	Bloomfield Springs "Bowl"	Nov-00		
a52	Kombolgie escarpment near Mary River Ranger Station	Nov-00		
a53	Edge of Murruwal Plateau - near Douglas Springs	Nov-00	221239	8494875
a54	Nitmiluk visitors center			
a55	Crystal Falls			
a56	Biddlecombe Cascades			
a57	Biddlecombe Cascades			
a58	View along escarpment just of Katherine Gorge helipad			
a59	General view of Kombolgie with overlying cretaceous unit		234990	8421153
a60	General view of Kombolgie with overlying cretaceous unit			
a61	General view of Kombolgie with overlying cretaceous unit			

Aerial Photographs

a62	General view of Kombolgie with overlying cretaceous unit			
a63	General view of Kombolgie with overlying cretaceous unit			
a64	Cretaceous capping on volcanics near Mt Felix		246000	8431000
a65	Cret. capping		246000	8432000
a66	Mt Felix		248807	8433756
a67	Terrance Creek		250000	8438000
a68	Katherine River at confluence of Ironbark Creek			
a69	Katherine River at confluence of Ironbark creek			
a70	Birdie Creek- downstream flow		266000	8454000
a71	Birdie Creek			
a72	Birdie Creek			
a73	Birdie Creek through Kombolgie		268560	8455404
a74	Birdie Creek through Kombolgie		268500	8456000
a75	Birdie Creek through Kombolgie		270380	8457030
a76	Birdie Creek through Kombolgie		268500	8456000
a77	Birdie Creek through Kombolgie		268500	8456000
a78	Katherine Valley view looking NW		293000	8474000
a79	Katherine River looking downstream		295000	8474000
a80	Centipede George- Katherine river		296526	8477288
a81	Katherine River upstream of entrance to Centipede gorge		298000	8498000
a82	Katherine River running right to left and snowdrop creek confluence		306364	8486469
a83	Katherine River		303000	8516000
a84	Katherine River		307217	8490342
a85	Katherine River looking downstream		301500	8519500
a86	Around site three, headwaters of Katherine River			
a87	Around site three, headwaters of Katherine River			
a88	Looking east along fracture line		297000	8514000
a89	Snowdrop Creek			
a90	Art site area			
a91	Art site area			
a92	Art site area			
a93	Art site area			
a94	Art site area			
a95	Art site area			
a96	Art site area			
a97	Snowdrop Creek just 500m downstream of 3			
a98	Sandy tributary		314000	8503000
a99	Katherine River		307000	8508000
a100	Katherine River		307000	8508001
a101	Katherine River		307000	8508002
a102	View over Kombolgie near Katherine River headwaters		303000	8513000
a103	Katherine river looking downstream		272000	848100
a104	Katherine river		271000	8478000
a105	Refueling at Sleisbeck			
a106	Billabong just near Sleisbeck (SW) 1km			
a107	Dipping Kombolgie sandstone		260000	8471000
a108	Dipping Kombolgie sandstone and Turnoff creek near Kath. river		259000	8470000
a109	Looking east		252000	8467000
a110	Mount Stow -Cretaceous capping			
a111	Snake Creek - looking downstream, just d/s of Keckwick spring			
a112	Snake Creek - looking downstream, just d/s of Keckwick spring			
a113	Around art site		225008	8479983
a114	Tributary of snake creek		238500	8457500
a115	Spring- from Cretaceous flowing to snake creek		238277	8455887
a116	Views over large pan on top of 17mile plateau-dry		234500	8454001
a117	View over plateau (17mile) looking north		231000	8457000
a118	Grevillea on headwater pan of 17mile creek		227000	8450000
a119	17 mile creek just upstream of flow - on Cretaceous - looking d/stream		223000	844800
a120	Veneer of cretaceous over Kombolgie sandstone, head of Fergusson River		211000	8447500
a121	Upper tributary of Fergusson. Moving south from Cretaceous over Kombolgie		210000	8447000
a122	Fergusson river, just west of plateau, flowing south before west		209000	8450000
a123	Around art site			

Aerial Photographs

a124	Fergusson river, just west of plateau, flowing south before west		209000	8450000
a125	Fergusson river, just west of plateau, flowing south before west		209000	8450000
a126	17 mile falls			
a127	Looking east from 17 mile valley		217000	8436500
a128	Gimbat Creek area		280000	8493000
a129	Escarpment near Gimbat Creek.		280000	8493000
a130	Gimbat creek - dry & sandy			
a131	Gimbat creek near Katherine confluence			
a132	Chopper at site three			
a133	Bloomfield Springs "Bowl"			



# Aerial Photographs



a1.jpg



a10.jpg



a100.jpg



a101.jpg



a102.jpg



a103.jpg



a104.jpg



a105.jpg



a106.jpg



a107.jpg



a108.jpg



a109.jpg



a11.jpg



a110.jpg



a111.jpg

# Aerial Photographs



a112.jpg



a113.jpg



a114.jpg



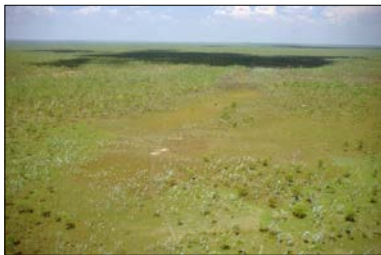
a115.jpg



a116.jpg



a117.jpg



a118.jpg



a119.jpg



a12.jpg



a120.jpg



a121.jpg



a122.jpg



a123.jpg



a124.jpg



a125.jpg

# Aerial Photographs



a126.jpg



a127.jpg



a128.jpg



a129.jpg



a13.jpg



a130.jpg



a131.jpg



a132.jpg



a133.jpg



a14.jpg



a15.jpg



a16.jpg



a17.jpg



a18.jpg



a19.jpg

# Aerial Photographs



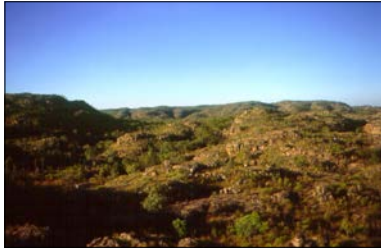
a2.jpg



a20.jpg



a21.jpg



a22.jpg



a23.jpg



a24.jpg



a25.jpg



a26.jpg



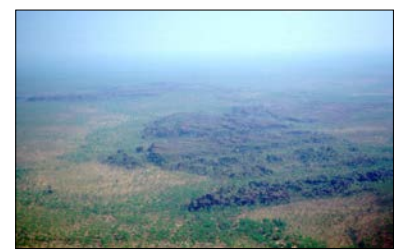
a27.jpg



a28.jpg



a29.jpg



a3.jpg



a30.jpg



a31.jpg



a32.jpg

# Aerial Photographs



a33.jpg



a34.jpg



a35.jpg



a36.jpg



a37.jpg



a38.jpg



a39.jpg



a4.jpg



a40.jpg



a41.jpg



a42.jpg



a43.jpg



a44.jpg

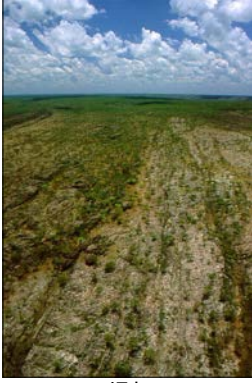


a45.jpg



a46.jpg

# Aerial Photographs



a47.jpg



a48.jpg



a49.jpg



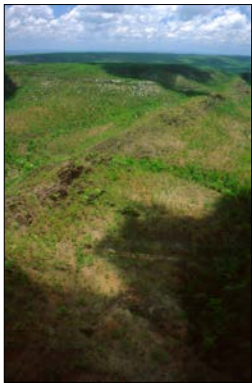
a5.jpg



a50.jpg



a51.jpg



a52.jpg



a53.jpg



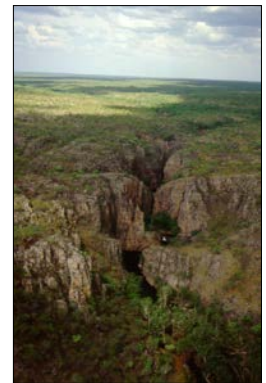
a54.jpg



a55.jpg



a56.jpg



a57.jpg



a58.jpg



a59.jpg



a6.jpg

# Aerial Photographs



a60.jpg



a61.jpg



a62.jpg



a63.jpg



a64.jpg



a65.jpg



a66.jpg



a67.jpg



a68.jpg



a69.jpg



a7.jpg



a70.jpg



a71.jpg



a72.jpg



a73.jpg

# Aerial Photographs



a74.jpg



a75.jpg



a76.jpg



a77.jpg



a78.jpg



a79.jpg



a8.jpg



a80.jpg



a81.jpg



a82.jpg



a83.jpg



a84.jpg



a85.jpg



a86.jpg



a87.jpg

# Aerial Photographs



a88.jpg



a89.jpg



a9.jpg



a90.jpg



a91.jpg



a92.jpg



a93.jpg



a94.jpg



a95.jpg



a96.jpg



a97.jpg



a98.jpg



a99.jpg



Katherine River Photographs

File Number	Description	Date	Easting	Northing
k1	Measuring water quality and flow; Katherine River headwaters	Dec-00		
k2	Buffalo wallow: near rock art site	Sep-00	324640	8513472
k3	Buffalo wallow: near rock art site	Sep-00	324640	8513472
k4	Katherine Gorge 1			
k5	Gill-net sampling - Katherine River		303980	8515712
k6	Katherine River upstream of road crossing			
k7	Katherine Gorge #10			
k8	Katherine Gorge #10			
k9	Katherine Gorge #10			
k10	Upper Katherine Gorge			
k11	Katherine Gorge 2			
k12	Katherine Gorge 2			
k13	Katherine Gorge 3			
k14	Nitmiluk Gorge	1999		
k15	Gauging flow (25L/s) at Headaters of Katherine River	Sep-00	292720	8518298
k16	Snowdrop Creek	Sep-00	324337	8498941
k17	Snowdrop Creek	Sep-00	324337	8498941
k18	Snowdrop Creek	Sep-00	324337	8498941
k19	Snowdrop Creek	Sep-00	324337	8498941
k20	Buffalo wallow: near rock art site	Sep-00		
k21	Katherine River west branch near crossing	Sep-00	303372	8516265
k22	Katherine River East branch at crossing looking upstream (25L/s)	Sep-00		
k23	Gauging Flow at Katherine River Headwaters	Sep-00		
k24	Katherine Gorge #10 overflow channel			
k25	Katherine Gorge #2			
k26	Katherine Gorge #2			
k27	Katherine Gorge #1			
k28	Katherine Gorge #10 overflow channel			
k29	Butterfly Gorge			
k30	Katherine Gorge #9			
k31	Katherine Gorge #10 overflow channel			
k32	Katherine Gorge #11			
k33	Katherine Gorge #9 overflow channel			
k34	Sedement sampling - overflow pool			
k35	Sedement sampling - overflow pool			
k36	Snowdrop Creek at Crossing	Dry 99		
k37	Katherine River at Grace Creek Confluence		252792	8433569
k38	Being "washed" - preparation by Margaret Katherine	Oct-00		
k39	Measuring water quality and flow; Katherine River headwaters	Nov-00		
k40	Headwaters looking upstream, confluence of major tributaries		307785	8509659
k41	Looking downstream near chopper landing site		322000	8491000
k42	Snowdrop Creek - Landing place		322000	8491000
k43	17 Mile Falls			
k44	17 Mile Falls			
k45	17 Mile Falls		216361	8437258
k46	Snowdrop Creek tribuary - looking upstream	Oct-99	323340	8500335
k47	Snowdrop Creek at Crossing		321452	8490658



# Katherine River Photographs



k1.jpg



k10.jpg



k11.jpg



k12.jpg



k13.jpg



k14.jpg



k15.jpg



k16.jpg



k17.jpg



k18.jpg



k19.jpg



k2.jpg



k20.jpg



k21.jpg



k23.jpg

# Katherine River Photographs



k24.jpg



k25.jpg



k26.jpg



k27.jpg



k28.jpg



k29.jpg



k3.jpg



k30.jpg



k31.jpg



k32.jpg



k33.jpg



k34.jpg



k35.jpg



k36.jpg



k37.jpg

# Katherine River Photographs



k38.jpg



k39.jpg



k4.jpg



k40.jpg



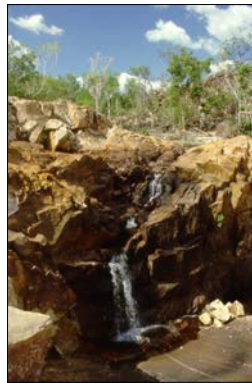
k41.jpg



k42.jpg



k43.jpg



k44.jpg



k45.jpg



k46.jpg



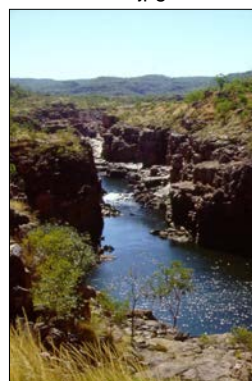
k47.jpg



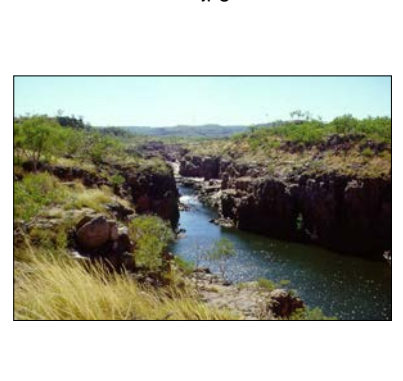
k5.jpg



k6.jpg



k7.jpg



k8.jpg

## Katherine River Photographs



k9.jpg

South Alligator River

File Number	Description	Date	Easting	Northing
s1	South Alligator River at El Sherana crossing			
s2	South Alligator River at El Sherana crossing		233020	8503261
s3	South Alligator River at El Sherana crossing			
s4	South Alligator Valley		229274	8504529
s5	South Alligator - 700m d/s of crossing	Oct-99		
s6	Rockhole near ranger station	Oct-99		
s7	Seepage area rockhole spring	Oct-99		
s8	Seepage area rockhole spring	Oct-99		
s9	Cretaceous spring near Kakadu highway	Oct-99		
s10	Koolpin Gorge	Sep-99		
s11	Rockhole Falls - near Mary River Ranger Station	Dec-99		
s12	Koolpin Gorge	Sep-99		
s13	South Alligator Valley near El Sherana	Sep-99		
s14	Koolpin Creek upstream of gorge	Sep-99		
s15	Koolpin Gorge	Sep-99		
s16	Koolpin Gorge		238381	8506719
s17	Koolpin Gorge			
s18	South Alligator Valley near El Sherana	Dry 99		
s19	South Alligator Valley near El Sherana	Dry 99		
s20	South Alligator Valley near El Sherana	Dry 99		
s21	South Alligator Valley near El Sherana	Dry 99		
s22	Koolpin Gorge		239015	8506431
s23	Koolpin Gorge		239015	8506431
s24	South Alligator River - upstream of Guratba		244118	8493277
s25	South Alligator River - upstream of Guratba		244118	8493277
s26	South Alligator River at El Sherana crossing		232750	8503250
s27	South Alligator 700m d/s of crossing	Oct-99	247500	8486700
s28	South Alligator 700m d/s of crossing	Oct-99	247500	8486700
s29	South Alligator 500m d/s of crossing - base flow	Oct-99	247249	8486229
s30	South Alligator 500m d/s of crossing - base flow	Oct-99	247249	8486229
s31	South Alligator at road crossing looking d/s	Oct-99	247300	8486000
s32	Dinner Creek road crossing G8205047	Oct-99	242800	8494000



# South Alligator River



s1.jpg



s10.jpg



s11.jpg



s12.jpg



s13.jpg



s14.jpg



s15.jpg



s16.jpg



s17.jpg



s18.jpg



s19.jpg



s2.jpg



s20.jpg



s21.jpg



s22.jpg

# South Alligator River



s23.jpg



s24.jpg



s25.jpg



s26.jpg



s27.jpg



s28.jpg



s29.jpg



s3.jpg



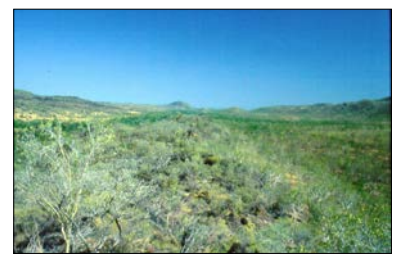
s30.jpg



s31.jpg



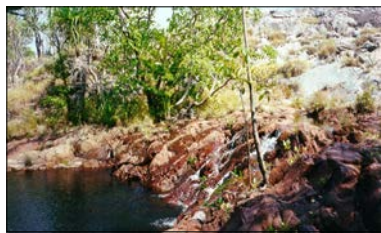
s32.jpg



s4.jpg



s5.jpg



s6.jpg



s7.jpg

## South Alligator River



s8.jpg



s9.jpg



Mann River Photographs

File Number	Description	Date	Easting	Northing
m1	training in gauging method, Katherine river west bank - Mann River Camp	Sep-00		
m2	Helen Larson catching fish - Mann River Camp	Sep-00		
m3	Buffalo damage - Mann River	Sep-00	323579	8521649
m4	Buffalo damage - Mann River	Sep-00	323579	8521649
m5	Buffalo damage - Mann River	Sep-00	323579	8521649
m6	Buffalo damage - Mann River	Sep-00	323579	8521649
m7	Flow <1L/s, Mann River upper most tributary	Sep-00		
m8	Buffalo damage - Mann River	Sep-00	323579	8521649
m9	Ethnobotany with Di Lucas - Mann River Camp			
m10	Eddie Junior and Daniel with Johnsons Crocodile			
m11	Black Bream catch - Mann River			
m12	Taking water chemistry - Mann River			
m13	Taking water chemistry - Mann River			
m14	Mann River at sampling point and crossing		341103	8529143
m15	Mann River downstream of camp			
m16	Friiled neck lizard			
m17	Buffalo damage - near rock art site	Sep-00	323579	8521649
m18	Paul Horner with long neck turtle - Snowdrop Creek	Sep-00		
m19	Talking with maps - Mann River Camp	Sep-00		
m20	Talking with maps - Mann River Camp	Sep-00		
m21	Talking with maps - Mann River Camp	Sep-00		
m22	Mann River at Cameco Camp		336606	8526433
m23	Water Resources equipment - Mann River Camp	Sep-00		
m24	Mann River headwaters - seepage at campsite	Oct-99	336400	8526000
m25	Mann River tributary headwaters	Oct-99	328523	8519268
m26	Mann River Headwaters	Oct-99	328523	8519208
m27	Snowdrop Creek tributary: looking downstream	Oct-99	323340	8500335



# Mann River Photographs



m1.jpg



m10.jpg



m11.jpg



m12.jpg



m13.jpg



m14.jpg



m15.jpg



m16.jpg



m17.jpg



m18.jpg



m19.jpg



m2.jpg



m20.jpg



m21.jpg



m22.jpg

# Mann River Photographs



m23.jpg



m24.jpg



m25.jpg



m26.jpg



m27.jpg



m3.jpg



m4.jpg



m5.jpg



m6.jpg



m7.jpg



m8.jpg



m9.jpg

## Spring Photographs

File Number	Description	Date	Easting	Northing
sp1	Mount Catt Spring		435927	8472709
sp2	Storm over Manyallaluk			
sp3	Upstream of Barunga Spring	wet 99-00	270547	8393564
sp4	Barunga Spring	wet 99-00	270547	8393564
sp5	Barunga Spring upper		270547	8393564
sp6	Mount Catt Spring		436676	8472248
sp7	Spring site near Yeuralba		255231	8420198
sp8	Maranboy Creek		261439	8395697
sp9	King Valley		246960	8403066
sp10	Number 3 Yard creek			
sp11	Maranboy Creek		261439	8395697
sp12	Barunga Spring	Oct-00	270547	8393564
sp13	Barunga Spring	Oct-00	270547	8393564
sp14	Barunga Spring	Oct-00	270547	8393564
sp15	Barunga Spring	Oct-00	270547	8393564
sp16	Barunga Spring	Oct-00	270547	8393564
sp17	Barunga Spring	Oct-00	270547	8393564
sp18	Barunga Spring upstream - after wet season	Oct-00	270547	8393564
sp19	Joes Garden - Roper Creek	Oct-00	258903	8399847
sp20	Joes Garden - Roper Creek	Oct-00	258903	8399847
sp21	Bloomfield springs - sampling point		223855	8480376
sp22	Joes Garden - Roper Creek	Oct-00	258903	8399847
sp23	Emu Creek Seepage		262073	8425902
sp24	Emu Creek near Manyallaluk		262073	8425902
sp25	Spring near Beswick		278929	8395464
sp26	Spring near Beswick		278929	8395464
sp27	Taking water sample at G8145373		239800	8404900
sp28	Seepage area near Rockhole Spring		203250	8500000
sp29	Spring on Little Roper river	Nov-99	299823	8347582
sp30	Tufa development near Little Roper River		299823	837582
sp31	Elsey Spring near Jilkmिंगgan		314800	8346750
sp32	Measuring water chemistry at G8145373		239800	8404900
sp33	Sinkhole on Maranboy Creek #2		264500	8376680
sp34	Sinkhole on Maranboy Creek #1		264500	8376680
sp35	Tindall Limestone outcropping in sinkhole on Maranboy Creek		264500	8376680
sp36	Sinkhole on Maranboy Creek		264500	8376680
sp37	Cretaceous spring near Kakadu highway		202094	8506898



# Spring Photographs



sp1.jpg



sp10.jpg



sp11.jpg



sp12.jpg



sp13.jpg



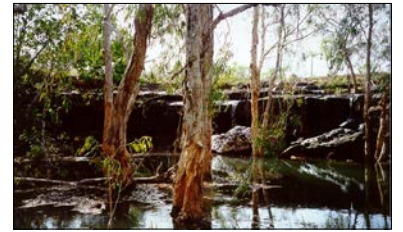
sp14.jpg



sp15.jpg



sp16.jpg



sp17.jpg



sp18.jpg



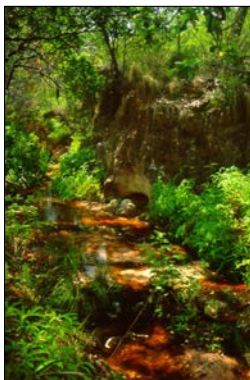
sp19.jpg



sp2.jpg



sp20.jpg



sp21.jpg



sp22.jpg

# Spring Photographs



sp23.jpg



sp24.jpg



sp25.jpg



sp26.jpg



sp27.jpg



sp28.jpg



sp29.jpg



sp3.jpg



sp30.jpg



sp31.jpg



sp32.jpg



sp33.jpg



sp34.jpg



sp35.jpg



sp36.jpg

# Spring Photographs



sp37.jpg



sp4.jpg



sp5.jpg



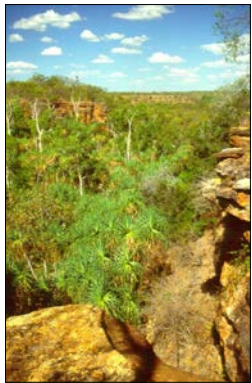
sp6.jpg



sp7.jpg



sp8.jpg



sp9.jpg



Waterhole Photographs

File Number	Description	Date	Easting	Northing
w1	Nipbamjarn		292013	8443859
w2	Beswick Falls		299850	8400776
w3	Beswick Falls Top		299850	8400776
w4	Comoye Billabong		249050	8416731
w5	Long John at Nipbamjarn		292013	8443859
w6	Nipbamjarn		292013	8443859
w7	Dortluk		281965	8398244
w8	Beswick Falls		299850	8400776
w9	Beswick Falls		299850	8400776
w10	Nipbamjarn bottom creek		292013	8443859
w11	Nipbamjarn top creek		292776	8444100
w12	Beswick Falls		299850	8400776
w13	Beswick Falls and Crocodile		299850	8400776
w14	Beswick Falls top		299850	8400776
w15	Beswick Falls top		299850	8400776
w16	Dortluk		281965	8398244
w17	Beswick Falls top		299850	8400776
w18	Freshwater crocodile at Beswick Falls		299850	8400776
w19	Beswick Falls Top		299850	8400776
w20	Dortluk		281965	8398244
w21	Beswick Waterfall	Nov-99	299850	8400776
w22	Franklin at Dortluk Falls	Sep-98	281965	8398244
w23	Dortluk Falls - Dook Creek	Sep-98	281965	8398244
w24	Norman Lane at Dortluk - Dook Creek	Sep-98	281965	8398244
w25	Dortlok - Dook Creek	Sep-98	281965	8398244
w26	"Black Rock" - Yanguli - West Branch Waterhouse	Sep-98	292776	8406402
w27	Beswick Falls in flood - Trevor Haig	Nov-99	299850	8400776
w28	Beswick Falls in flood - David George	Nov-99	299850	8400776
w29	Dook Creek Falls - Dortluk		281965	8398244
w30	Dook Creek Falls - Dortluk		281965	8398244
w31	Black rock Waterhole- Waterhouse West Branch		292776	8406402
w32	Black rock Waterhole- Waterhouse West Branch		292776	8406402
w33	Sandstone gorge- West Branch Waterhouse		295228	8414842
w34	Sandstone gorge - West Branch Waterhouse		295228	8414842
w35	Rockhole - near Mary River Ranger Station		203400	8499600
w36	Rockhole - near Mary River Ranger Station baseflow		203400	8499600
w37	Chambers River tributary, no flow	Oct-99	310700	8392300
w38	Chambers River tributary, no flow	Nov-99	310700	8392300



# Waterhole Photographs



w1.jpg



w10.jpg



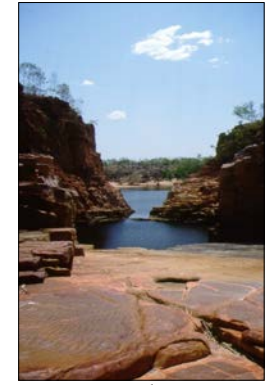
w11.jpg



w12.jpg



w13.jpg



w14.jpg



w15.jpg



w16.jpg



w17.jpg



w18.jpg



w19.jpg



w2.jpg



w20.jpg



w21.jpg

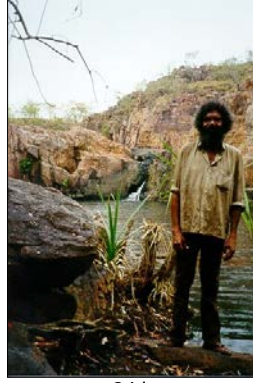


w22.jpg

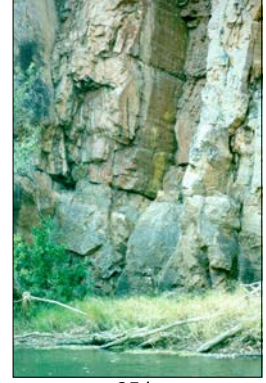
# Waterhole Photographs



w23.jpg



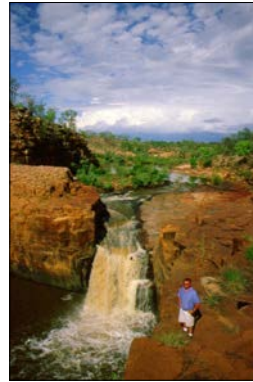
w24.jpg



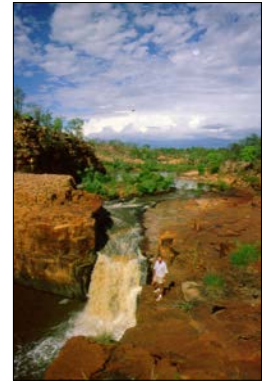
w25.jpg



w26.jpg



w27.jpg



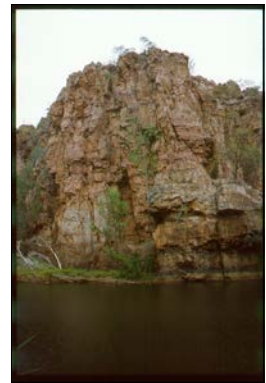
w28.jpg



w29.jpg



w3.jpg



w30.jpg



w31.jpg



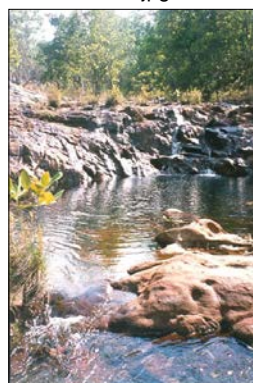
w32.jpg



w33.jpg



w34.jpg



w35.jpg



w36.jpg

# Waterhole Photographs



w37.jpg



w38.jpg



w4.jpg



w5.jpg



w6.jpg



w7.jpg



w8.jpg



w9.jpg



King River Photographs

File Number	Description	Date	Easting	Northing
b1	King river gauging		245232	8394546
b2	King River			
b3	King River - upstream section		249894	8404111
b4	King Valley			
b5	King River near KRG1	Sep-98	257771	8413033
b6	KRG3 - flow from tributary	Sep-98		
b7	King River near KRG2	Sep-98	255721	8412109
b8	Upper King River	Sep-98		
b9	King River	Sep-98		
b10	King River	Sep-98		
b11	King River KRG5	Sep-98		
b12	King River KRG6	Sep-98		
b13	King River at crossing upstream of homestead			
b14	King River gauging site	1998	247000	8399329



# King River Photographs



b1.jpg



b10.jpg



b11.jpg



b12.jpg



b13.jpg



b14.jpg



b2.jpg



b3.jpg



b4.jpg



b5.jpg



b6.jpg



b7.jpg



b8.jpg



b9.jpg



Drilling and Geology

File Number	Description	Date	Easting	Northing
d1	Cretaceous capping near Wugularr		288958	8389643
d2	Cretaceous capping near Wugularr		288958	8389643
d3	Barunga Production Bore			
d4	Barunga Production Bore			
d5	King Valley cretaceous cliff and spring			
d6	Cretaceous unconformity - Kakadu Hwy			
d7	Cretaceous unconformity - Kakadu Hwy			
d8	King Valley cretaceous cliff and spring		239645	8404433
d9	Soil Sampling @ Gorge #9 overflow			
d10	Swirl hole @ Gorge 9 overflow			
d11	Flood debris leaves - Butterfly Gorge			
d12	Peter Sandercock in swirl hole Gorge #9 overflow			
d13	RN32447	Nov-99		
d14	Cretaceous cutting - near Barunga	Oct-00		
d15	Cretaceous cutting (note spring) - near Barunga	Oct-00		
d16	Cretaceous cutting (note laterite pipes) - near Barunga	Oct-00		
d17	Cretaceous cutting (note spring) - near Barunga	Oct-00		
d18	Weathered cretaceous sandstone - Bloomfield Springs			
d19	Weathered cretaceous sandstone - Bloomfield Springs			
d20	Bloomfield Springs - cliff-face			
d21	Erosion inside Bloomfield Springs "bowl"			
d22	Erosion inside Bloomfield Springs "bowl" (closeup)			
d23	Cretaceous Sandstone cutting - Bloomfield Springs			
d24	Investigation Drilling	1998		
d25	Hindrance Creek	Dry 99	268421	8429310
d26	Outcrop of Hindrance Creek sandstone		268421	8429310
d27	Outcrop of Hindrance Creek sandstone		268421	8429310
d28	Drill cuttings for analysis			
d29	Investigation Drilling	1998		
d30	Drill cuttings for analysis			
d31	Investigation drilling - digging channel for flow measurement			
d32	Old bore and tank north of Manyallaluk			
d33	Drilling near Wugularr	1999		
d34	Drilling near Wugularr	1999	301417	8393099
d35	Geophysics - resistivity soundings King Valley - east boundary		250778	8397761
d36	Geophysics - resistivity soundings King Valley - east boundary			
d37	Geophysics - resistivity soundings King Valley - east boundary			
d38	Dook Creek Dolomite - near Wugularr: near RN21689		300000	8388700
d39	Outcrop of Kombolgie sandstone near RN21689		301200	8388400
d40	Dook Creek Dolomite - near Wugularr: old airstrip		301350	8391400
d41	Gorrie and Cole Drilling- Mary River Roadhouse hole #2	Oct-99	199500	8494000
d42	Mary River Roadhouse hole #2	Oct-99	199500	8494000
d43	Mary River Roadhouse hole #2	Oct-99	199500	8494000
d44	Inside Bloomfield Springs "bowl"	Nov-00		
d45	Inside Bloomfield Springs "bowl"	Dec-00		
d46	Inside Bloomfield Springs "bowl"	Jan-01		
d47	Inside Bloomfield Springs "bowl"	Feb-01		



# Drilling and Geology



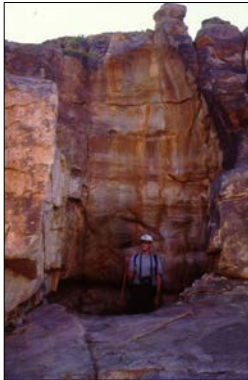
d1.jpg



d10.jpg



d11.jpg



d12.jpg



d13.jpg



d14.jpg



d15.jpg



d16.jpg



d17.jpg



d18.jpg



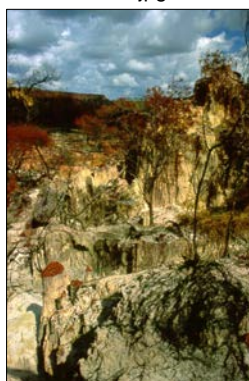
d19.jpg



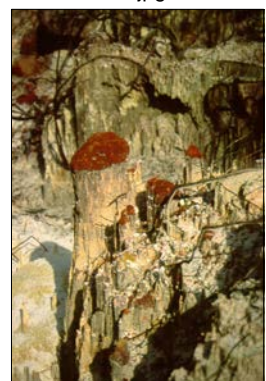
d2.jpg



d20.jpg

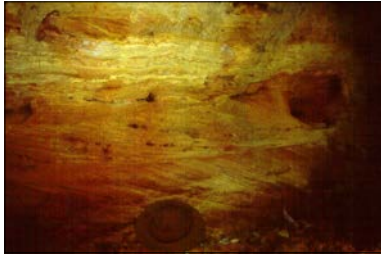


d21.jpg



d22.jpg

# Drilling and Geology



d23.jpg



d24.jpg



d25.jpg



d26.jpg



d27.jpg



d28.jpg



d29.jpg



d3.jpg



d30.jpg



d31.jpg



d32.jpg



d33.jpg



d34.jpg



d35.jpg



d36.jpg

# Drilling and Geology



d37.jpg



d38.jpg



d39.jpg



d4.jpg



d40.jpg



d41.jpg



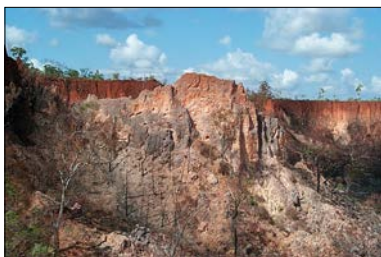
d42.jpg



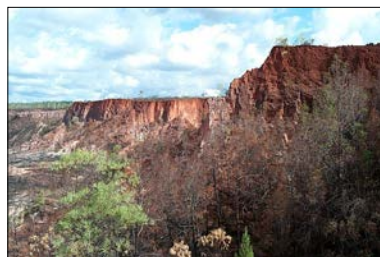
d43.jpg



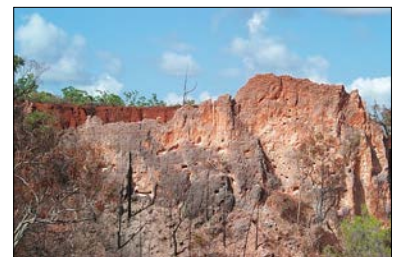
d44.jpg



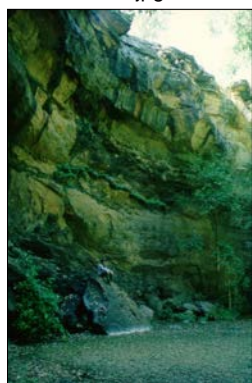
d45.jpg



d46.jpg



d47.jpg



d5.jpg



d6.jpg



d7.jpg

## Drilling and Geology



d8.jpg



d9.jpg

General Photographs

File Number	Description	Date	Easting	Northing
g1	Storm over Manyallaluk		266291	8420509
g2	Storm over Manyallaluk		266291	8420509
g3	Storm over Manyallaluk		266291	8420509
g4	Road to Big Sunday			
g5	Big Sunday			
g6	Sleisbeck Road			
g7	View east to Eva Valley from Yeuralba		255681	8422759
g8	View north to Katherine River near Yeuralba		255681	8422759
g9	Bukalorkmi Creek view			
g10	Edith River in Flood from Stuart Hwy	Wet 99	179883	8430114
g11	Edith River in Flood from Stuart Hwy	Wet 99	179883	8430114
g12	kids at Mann River Camp			
g13	Sunset at "Dinner camp" - Upper Katherine River			
g14	short-neck turtle - upper Katherine River			
g15	Reggie Miller @ Rock art site	Sep-00		
g16	Victor's wife	Aug-99		
g17	Victor's Kid	Aug-99		
g18	Victor Hood	Aug-99		
g19	Victor Hood's wife	Aug-99		
g20	Victor's boy	Aug-99		
g21	Victor's kids	Aug-99		
g22	Old tractor at old King Valley homestead on west bank			



# General Photographs



g1.jpg



g10.jpg



g11.jpg



g12.jpg



g13.jpg



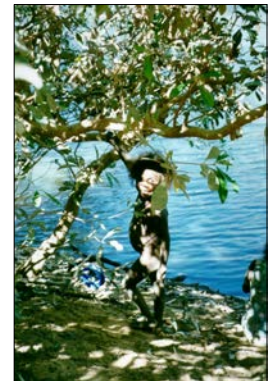
g14.jpg



g15.jpg



g16.jpg



g17.jpg



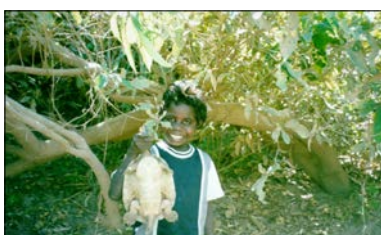
g18.jpg



g19.jpg



g2.jpg



g20.jpg



g21.jpg



g22.jpg

## General Photographs



g3.jpg



g4.jpg



g5.jpg



g6.jpg



g7.jpg



g8.jpg



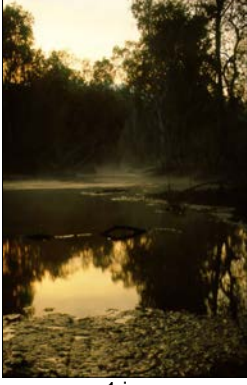
g9.jpg

## Roper River Photographs

File Number	Description	Date	Easting	Northing
r1	Mount Jean Creek sunrise			
r2	Waterhouse River in flood - Wugularr	1999		
r3	Waterhouse River in flood - Wugularr	1999	295795	8390106
r4	Waterhouse River above Beswick Falls	Aug-00		
r5	Mount Jean Creek sunrise		406990	8501646
r6	Small sinkhole near Beswick Borefield	Nov-99		
r7	Dook Creek Dolomite with sinkhole	Nov-99	300233	8387915
r8	Dook Creek Dolomite with sinkhole	Nov-99		
r9	Dook Creek Dolomite spring near Wugularr	Nov-99		
r10	Stevies Hole - Waterhouse River	Nov-99		
r11	Tufa on South Bank of Roper River near Elsey Creek		314364	8346700
r12	Tufa on South Bank of Roper River near Elsey Creek		314364	8346700



# Roper River Photographs



r1.jpg



r10.jpg



r11.jpg



r12.jpg



r2.jpg



r3.jpg



r4.jpg



r5.jpg



r6.jpg



r7.jpg



r8.jpg



r9.jpg





